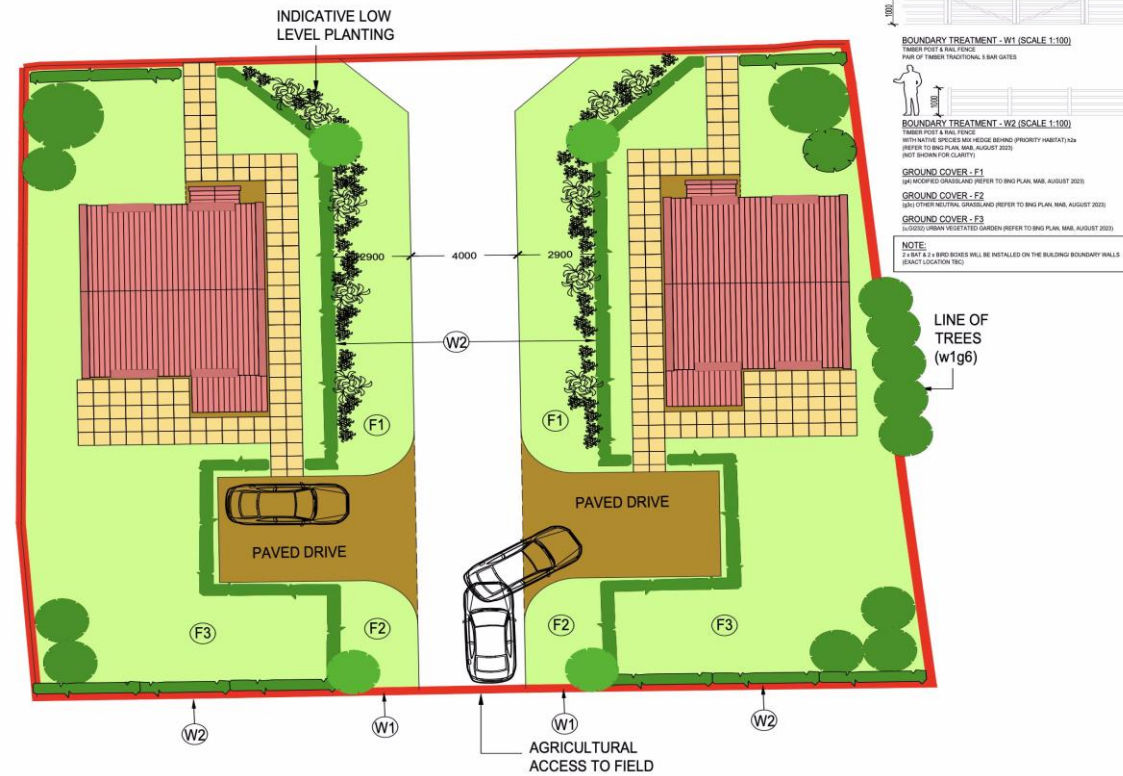


HENDERSONS



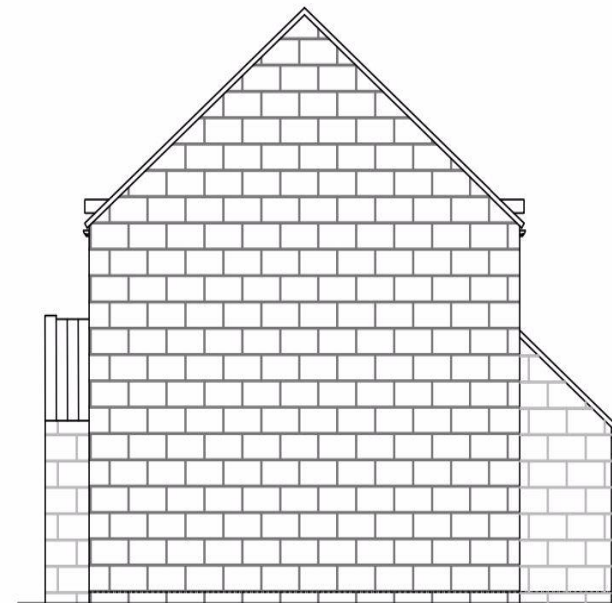
PLOT 1, ESK VIEW, WHITBY
Guide Price £100,000



△ PREVIOUS RIDGE HEIGHT



ELEVATION A-A



ELEVATION B-B

ABOUT THIS PROPERTY

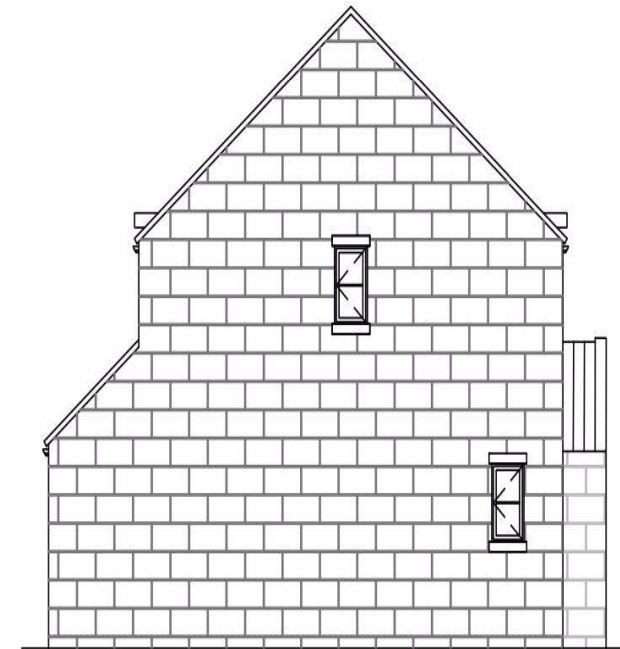
Hendersons introduce Plot 1, Esk View, Egton, a captivating new build plot perfectly situated in the heart of the highly sought-after North Yorkshire Moors National Park village of Egton. This idyllic plot introduces a meticulously planned detached two-bedroom cottage, thoughtfully designed to cater to the needs of first-time buyers or those seeking a more intimate living space. Upon entering, you will be welcomed by a well-designed entrance hallway featuring a convenient downstairs toilet. The spacious lounge, adorned with bi-folding doors opening onto the rear patio area, creates a seamless indoor-outdoor flow. An additional study area within the lounge adds versatility to the space, while a generously sized opening effortlessly connects the lounge to the kitchen/dining room. Ascend to the first floor, where two double bedrooms await. The principal bedroom boasts the added luxury of en-suite facilities, ensuring a private retreat. Completing the first will be a stylish main house bathroom, offering both comfort and convenience. Externally, the property is enhanced by a paved driveway accommodating two vehicles, providing practicality for the modern day household. The surrounding garden with a feature patio and paths, envelops the house in natural beauty. Situated in an optimal location, this new home offers unparalleled views of the rolling countryside and the Moor beyond.. It should be noted that this plot is subject to a principle dwelling clause which means this will be the main occupants principle dwelling and will reside in the property 80% of the time in any calendar year. The full planning conditions are available via the NYMNP Planning portal using the reference number NYM/2023/0513

Key information about this property...

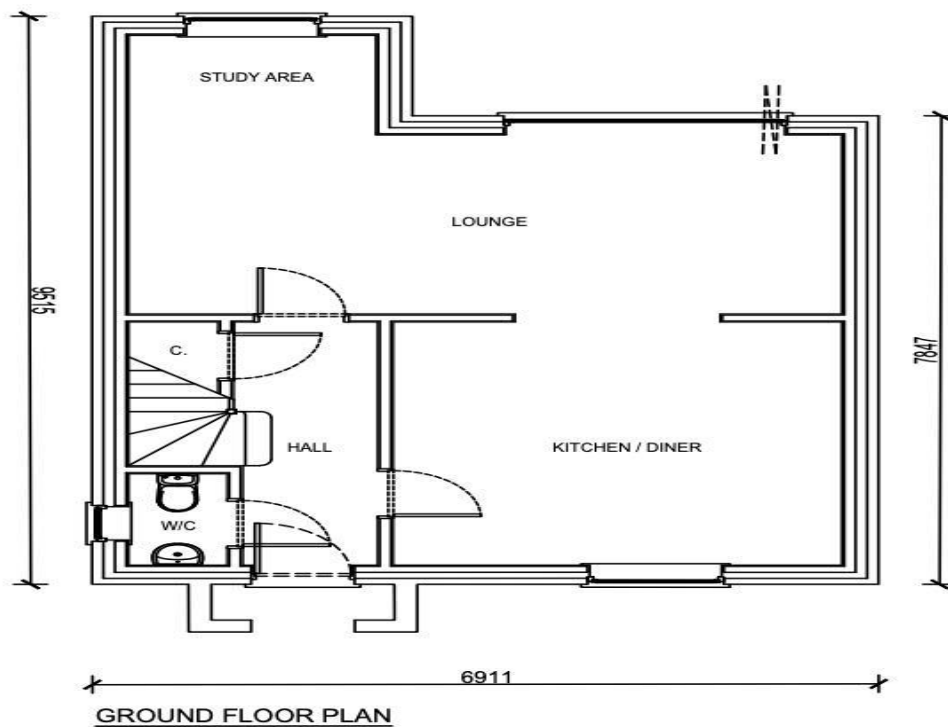
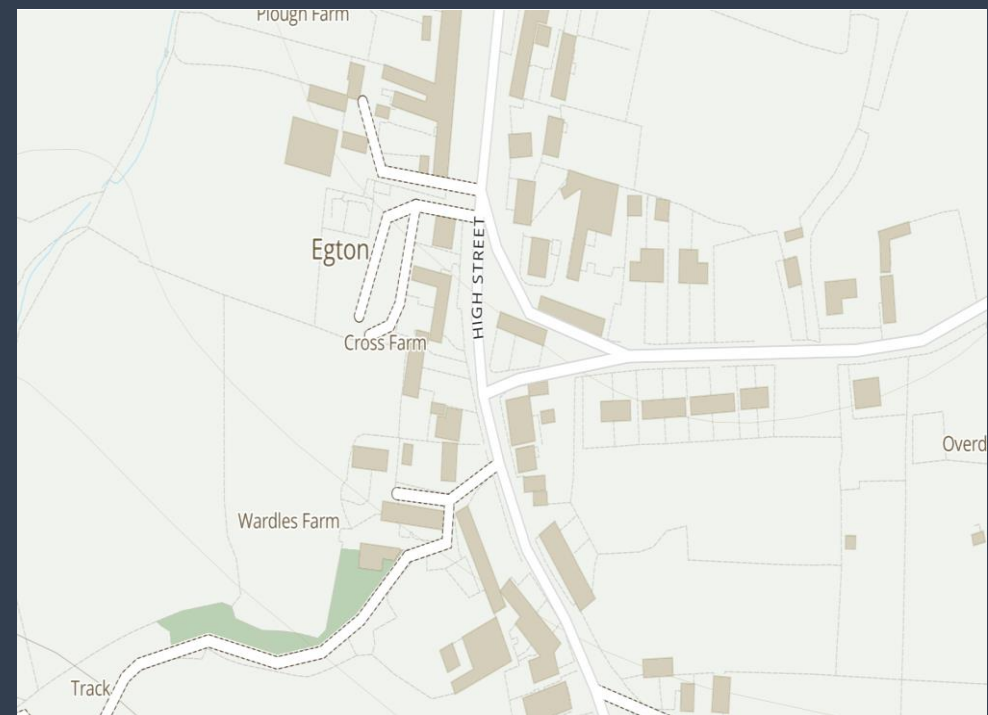
EPC Rating: N/A
Council Tax Band: 2
Property Tenure: Freehold
Property Reference: 5491
Services:



ELEVATION C-C



ELEVATION D-D



All material is Copyrighted to Henderson Property Services (Yorkshire) Limited and must not be copied without written permission from Hendersons.

Henderson Property Services (Yorkshire) Limited trading as Hendersons
Registered in England and Wales at 21 Flowergate, Whitby, North Yorkshire
YO21 3BA
Company No: 09395331 VAT No: 208959178

HENDERSONS